

Fact Book

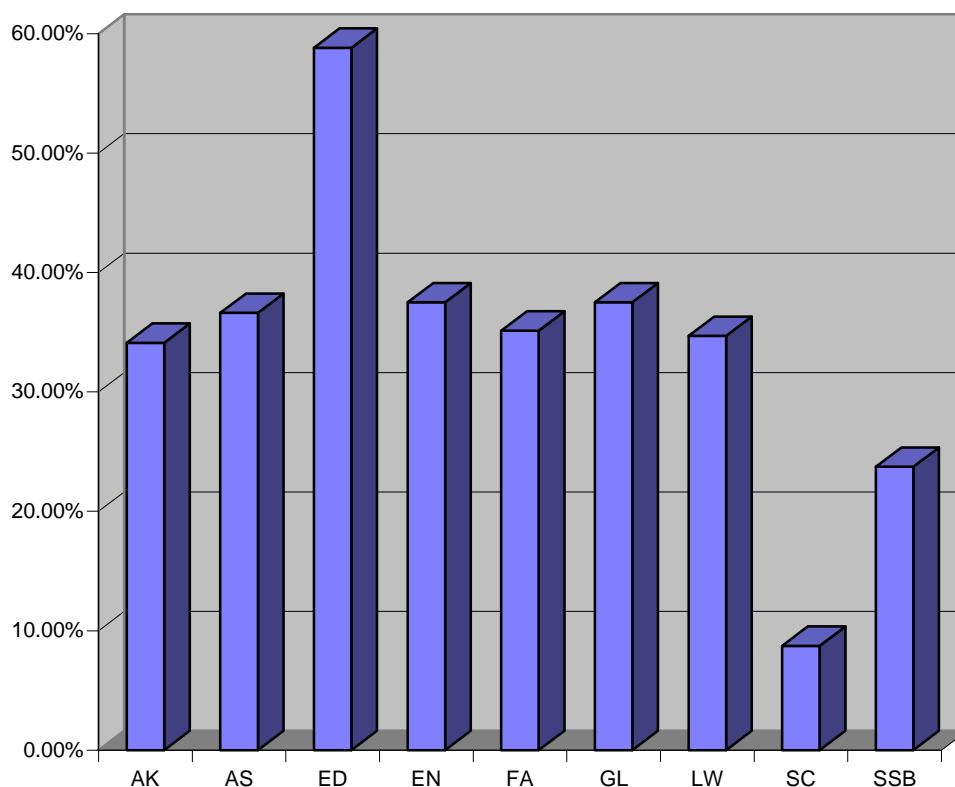
1996-97

YORK UNIVERSITY - UNIVERSITÉ YORK

Full Time Faculty Distribution By Gender -- October 1, 1996

| Faculty | Male | | Female | | Total | | Grand Total |
|-----------------------------|-----------------|-------------|-----------------|-------------|-----------------|-------------|--------------|
| | <u>Ten/Prob</u> | <u>C.L.</u> | <u>Ten/Prob</u> | <u>C.L.</u> | <u>Ten/Prob</u> | <u>C.L.</u> | |
| Arts | 320 | 18 | 168 | 7 | 488 | 25 | 513 |
| Atkinson | 90 | 0 | 52 | 0 | 142 | 0 | 142 |
| Education | 14 | 0 | 20 | 0 | 34 | 0 | 34 |
| Environmental Studies | 19 | 1 | 12 | 0 | 31 | 1 | 32 |
| Fine Arts | 46 | 2 | 23 | 3 | 69 | 5 | 74 |
| Glendon | 59 | 1 | 35 | 1 | 94 | 2 | 96 |
| Osgoode | 29 | 3 | 15 | 2 | 44 | 5 | 49 |
| Pure and Applied Science | 113 | 2 | 10 | 1 | 123 | 3 | 126 |
| Schulich School of Business | 44 | 1 | 13 | 1 | 57 | 2 | 59 |
| Total | 734 | 28 | 348 | 15 | 1,082 | 43 | 1,125 |

**Percentage of Female F/T Faculty
as of October 1, 1996**



Contractually Limited Faculty are full-time faculty with contracts of defined term